



LABORATORY GROWN DIAMOND REPORT **ELECTRONIC COPY**

MM/DD/YYYY

IGI Report Number **LG18328883**

Shape and Cutting Style **ROUND BRILLIANT**

Measurements **6.54 - 6.57 x 3.97 MM.**

GRADING RESULTS

Carat Weight **1.06 CARATS**

Color Grade **D**

Clarity Grade **INTERNALLY FLAWLESS**

Cut Grade **IDEAL**

ADDITIONAL GRADING INFORMATION

Polish **EXCELLENT**

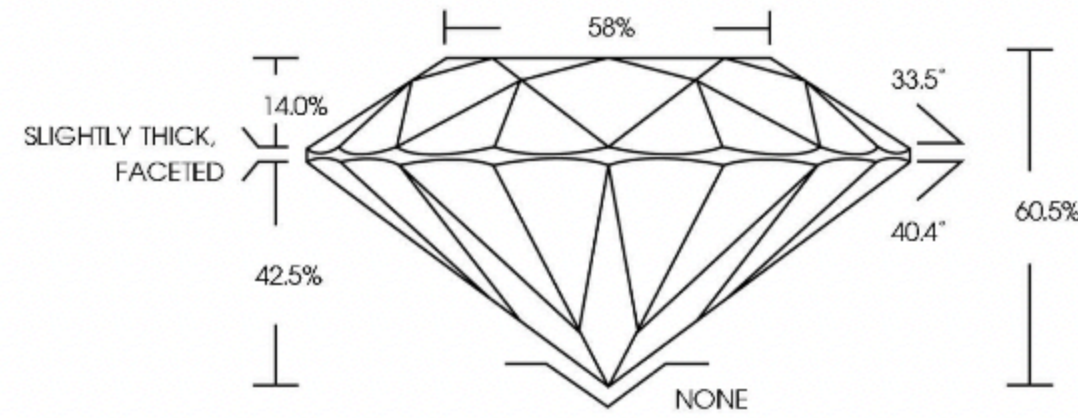
Symmetry **EXCELLENT**

Fluorescence **NONE**

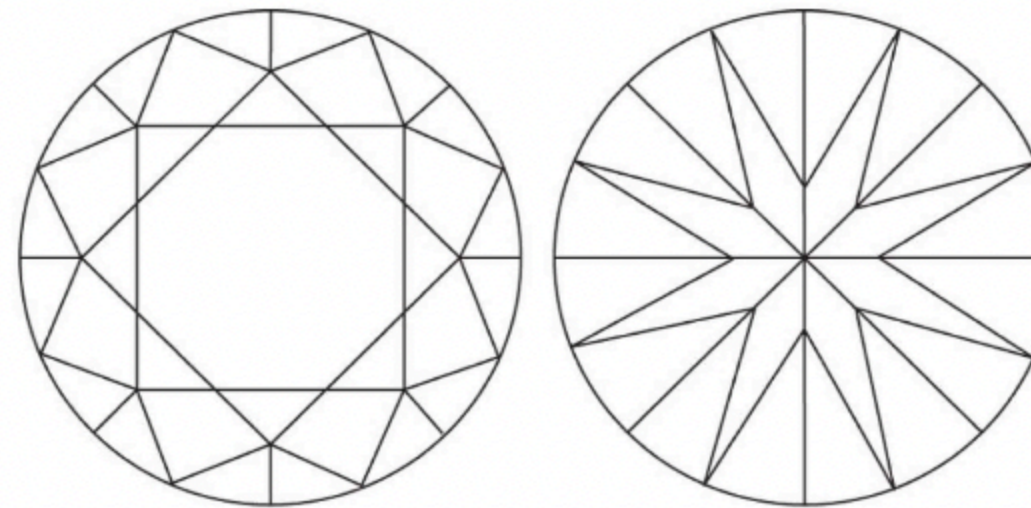
Inscription(s) **LAG GROWN LG18328883**

Comments:
As Grown - No indications of post-growth treatment.
This Laboratory Grown Diamond was created by Chemical Vapor Deposition (CVD) growth process. Clarity grade based on cloud throughout stone not shown.
Type IIa
Blue nuance

PROPORTIONS



CLARITY CHARACTERISTICS



KEY TO SYMBOLS

Red symbols indicate internal characteristics.
Green symbols indicate external characteristics.

The laboratory grown diamond described in this Report (Report) has been graded, tested, analyzed, examined and/or inscribed by International Gemological Institute (IGI). A laboratory grown diamond is one that has essentially the same chemical, physical and optical properties as a mined diamond, with the exception of being grown by man (a manufactured product). This is a manufactured (man-made) diamond produced by CVD (chemical vapor deposition) or by HPHT (high pressure high temperature) growth processes and may include post-growth treatments to alter the color. IGI employs and utilizes these techniques and equipment currently available to IGI, including, without limitation, 10X magnification, corrected triplet loupe, binocular microscope, master color comparison stones, non-contact-optical measuring device, Spectrophotometer and such other instruments and/or processes as deemed appropriate by IGI. In the case where diamond melee is set in a mounting, a random testing procedure, regarding the diamonds being of natural or laboratory created origin will be performed. This Report includes advanced security features. A duly accredited gemologist or jeweler can advise you with respect to the importance of and interrelationship between cut, color, clarity and carat weight.
THIS REPORT IS NEITHER A GUARANTEE, VALUATION, NOR APPRAISAL OF THE GEMSTONE DESCRIBED HEREIN. PLEASE REVIEW THE LIMITATIONS AND RESTRICTIONS SET FORTH ONLINE. FOR ADDITIONAL INFORMATION, IMPORTANT LIMITATIONS AND DISCLAIMERS, PLEASE GO TO WWW.IGI.ORG/TERMS.HTML OR CALL 1-888-BUY-IGI.

GRADING SCALES

CLARITY

IF	VVS 1-2	VS 1-2	SI 1-2	I 1-3
Internally Flawless	Very Very Slightly Included	Very Slightly Included	Slightly Included	Included

COLOR

D	E	F	G	H	I	J	Faint	Very Light	Light





INTERNATIONAL GEMOLOGICAL INSTITUTE

JEWELRY REPORT

ELECTRONIC COPY

SUMMARY NO :**48J542622408**

DESCRIPTION :One Yellow Gold Ring, Partly Rhodium Plated, weighing in total 2.38 g., containing Thirty Four Laboratory Grown Diamonds

CENTER STONE (01)

SHAPE/CUT :Round Brilliant

EST.WT. :**0.52 Carat**

COLOR :**E - F**

CLARITY :**VVS**

COMMENTS

:Grading & Identification as mounting permits. Weight purported by client. Summary number engraved. Style # CJR394

SIDE STONES (33)

SHAPE/CUT :Round Brilliant

TOTAL EST.WT. :**0.20 Carat**

COLOR :**E - F**

CLARITY :**VVS - VS**



Important notice: This report is subject to IGI's Terms and Condition, which can be found at www.igi.org/reports/terms-and-condition.

The limitations included in our Terms & Condition apply to every person reading or receiving this report.

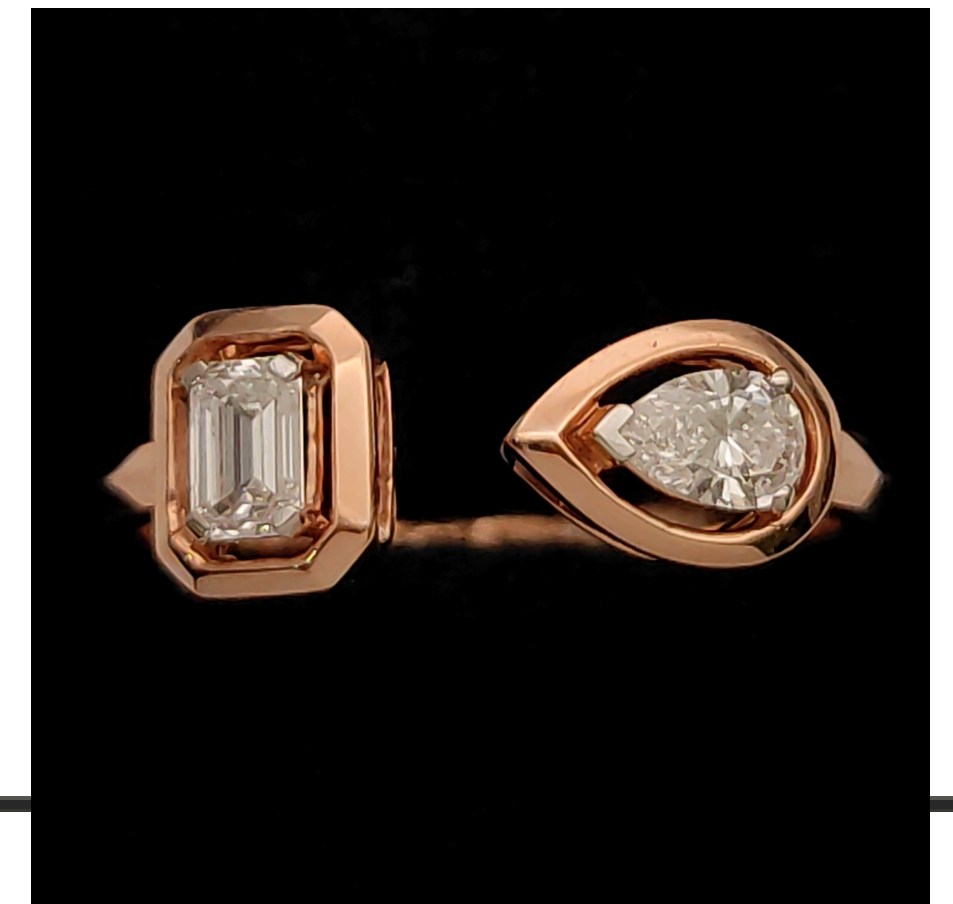


JEWELRY REPORT



Report No	SGLSTJ484178C
Product	Ring
Metal/Stamped	Gold / 14k
Gross Weight	1.99 grams
Shape	Pear & Emerald
Diamond(s)	2
Est. dia. Wt.	0.40 carat(s)
Color	E - F
Clarity	VVS - VS
OriginAssure™	Lab-Grown Diamonds
Comments	Graded as mounting permits.

CJR387



For Terms and Conditions visit <https://sgl-labs.com/terms-conditions/>